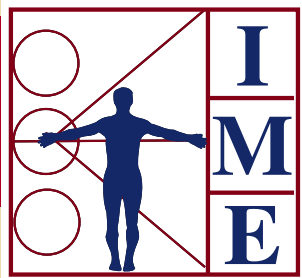




joint lecture

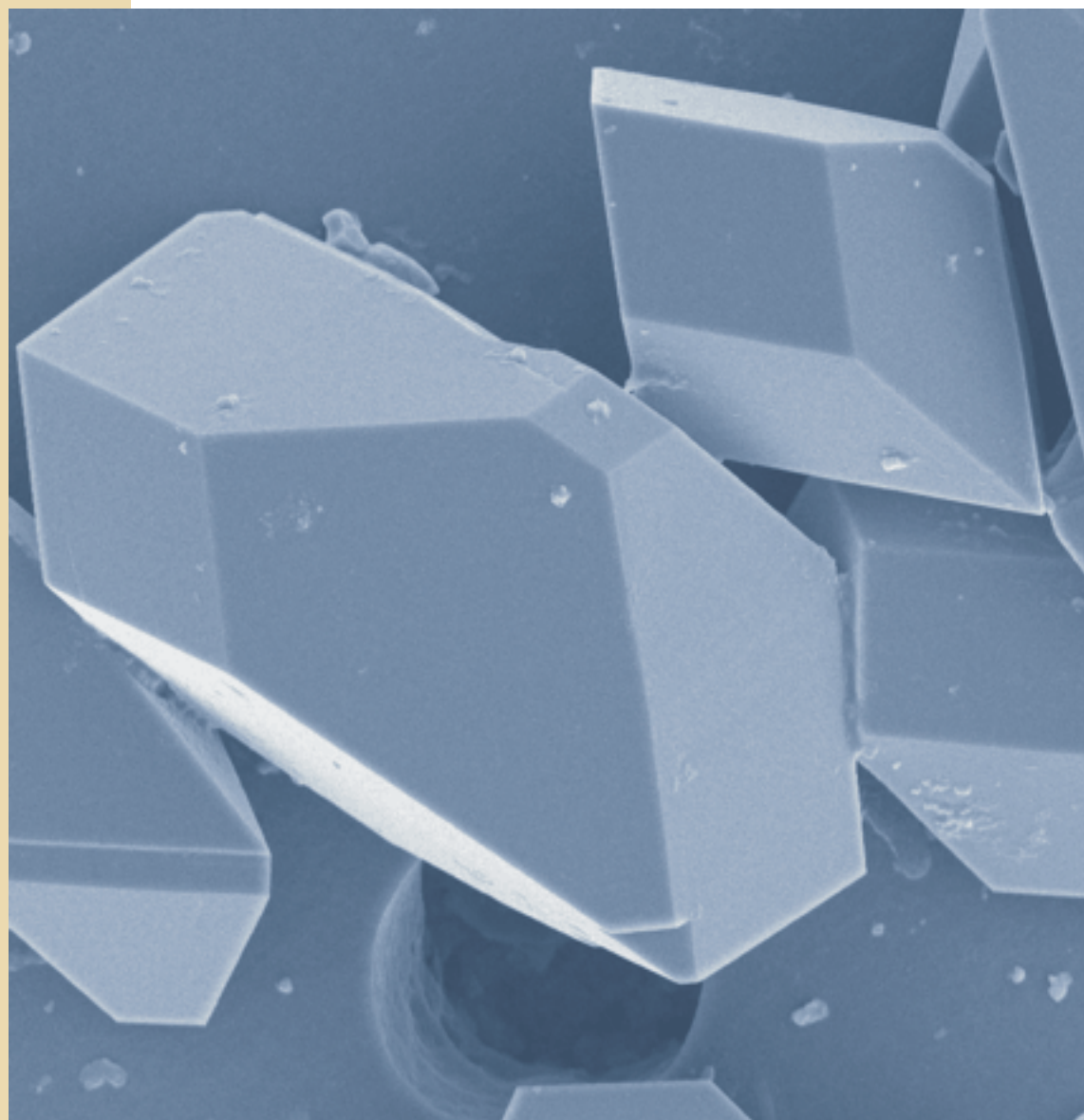


I NSTITUTE FOR
M EDICINE AND
E NGINEERING

LRSMI

The Laboratory
for Research on
the Structure
of Matter

Crystals Inside and Out: From Soft Crystals to Kidney Stones



Michael D. Ward

Department of Chemical Engineering and Materials Science
University of Minnesota

date:
time:
place:

Friday, March 4, 2005

12:00 noon

Second Floor Conference Room

Vagelos Research Labs

3340 Smith Walk

Philadelphia, PA 19104

for more information, visit <http://www.lrsm.upenn.edu>